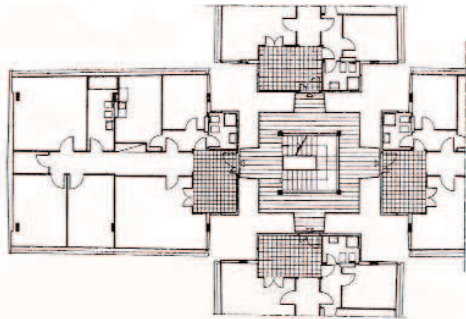
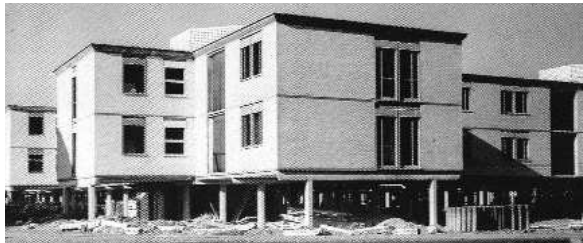


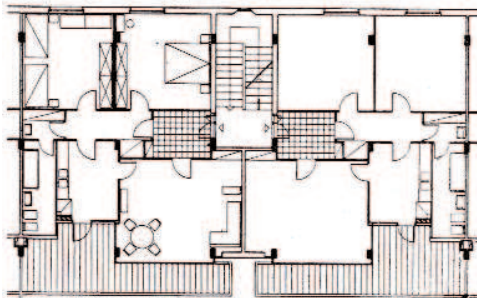


1. villaggio olimpico quartiere INCIS per 6.500 abitanti

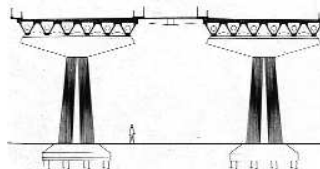
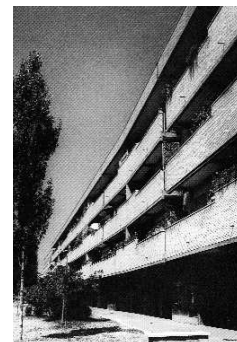
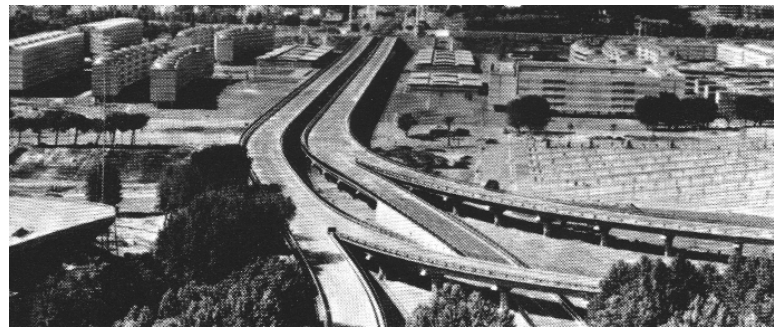
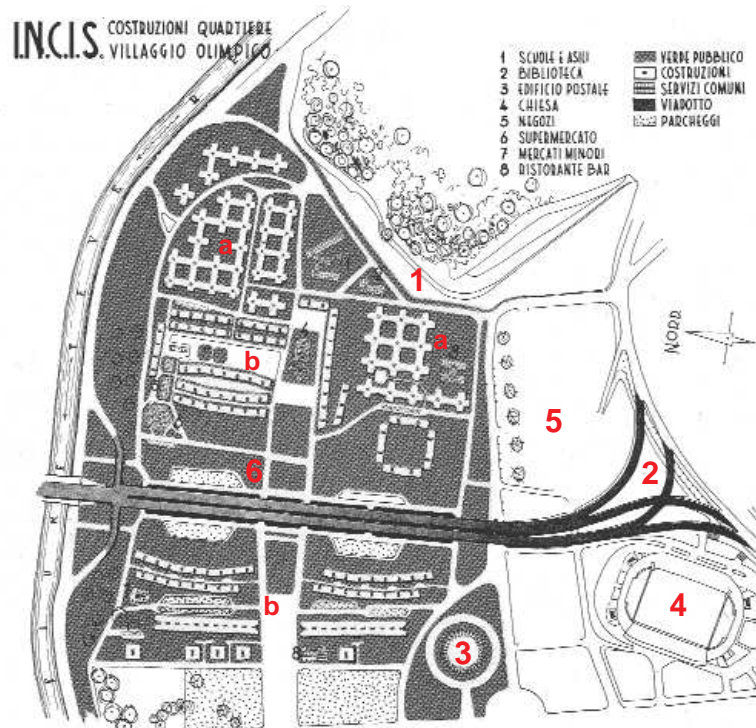


a. A. Libera, case basse a croce

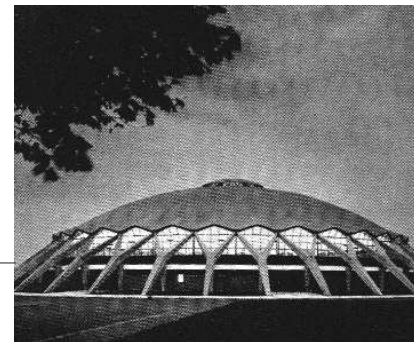
b. L. Moretti, case lineari



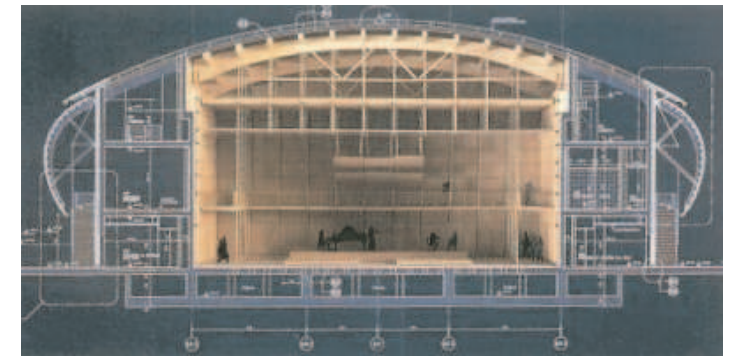
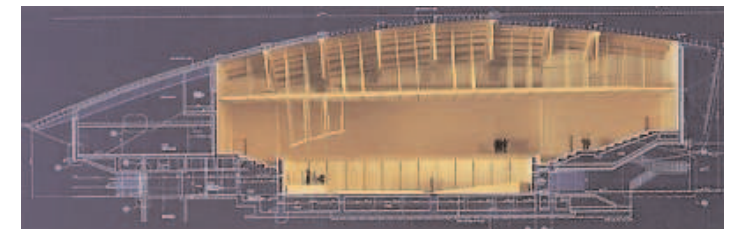
Visita al Flaminio: Villaggio Olimpico, Palazzetto dello sport, Auditorium Parco della Musica



2. viadotto di corso Francia



3. palazzetto dello sport



5. auditorium . parco della musica

1. villaggio olimpico . 1958-1960
V. Cafiero, A. Libera, L. Moretti, V. Monaco, A. Luccichenti
2. viadotto di corso Francia . 1958-1960
V. Cafiero, A. Libera, L. Moretti, V. Monaco, A. Luccichenti, P.L. Nervi
3. palazzetto dello sport . 1956-1958
P.L. Nervi, A. Vitellozzi
4. stadio Flaminio . 1957-1959
P.L. Nervi, A. Nervi
5. auditorium parco della musica . 1995-2002
R. Piano
6. chiesa di S. Valentino . 1983-1986
F. Berarducci