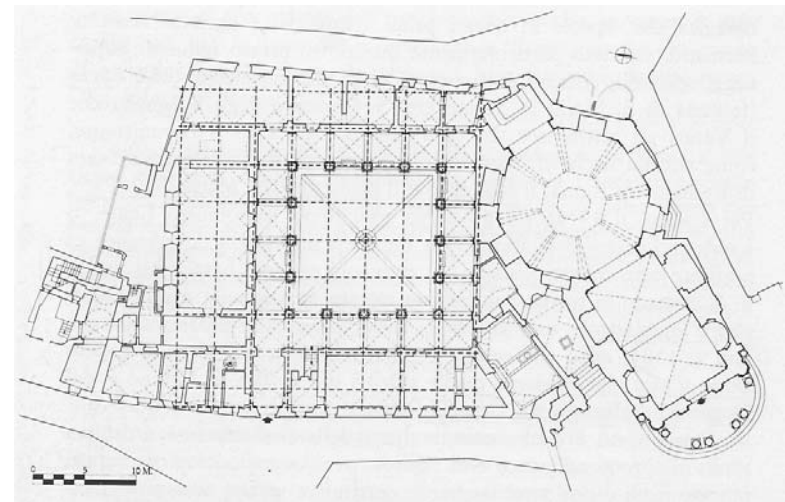
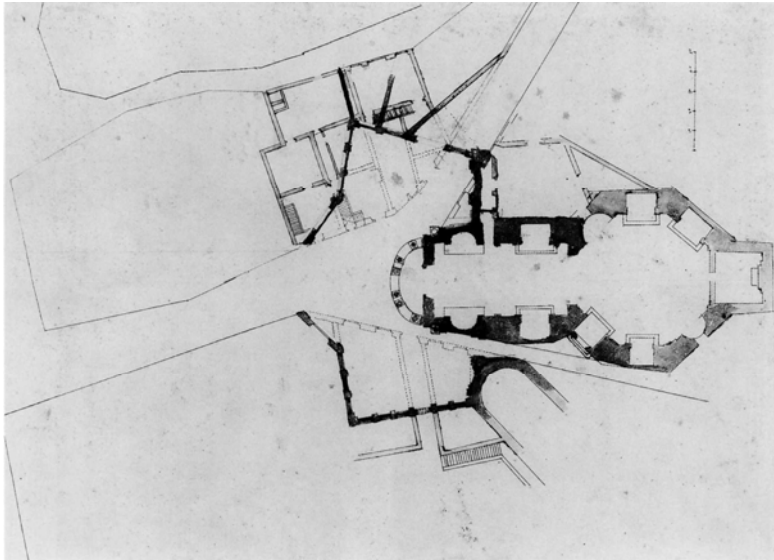


Corso di *Architettura del XVII secolo in Italia*  
12.2) Pietro da Cortona: S. Maria della Pace / S. Maria in via Lata  
/ SS. Ambrogio e Carlo al Corso













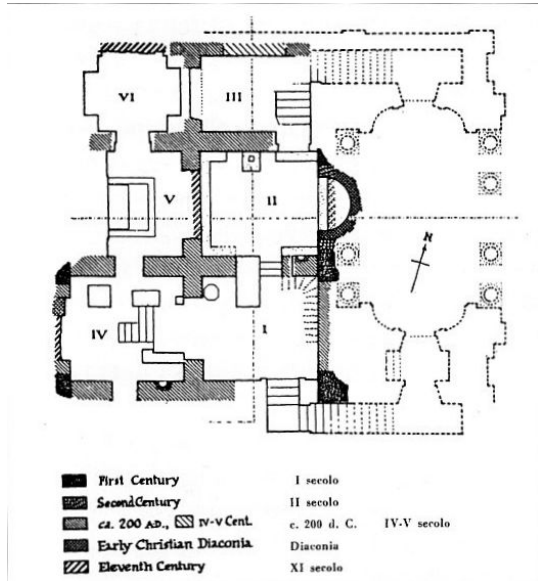
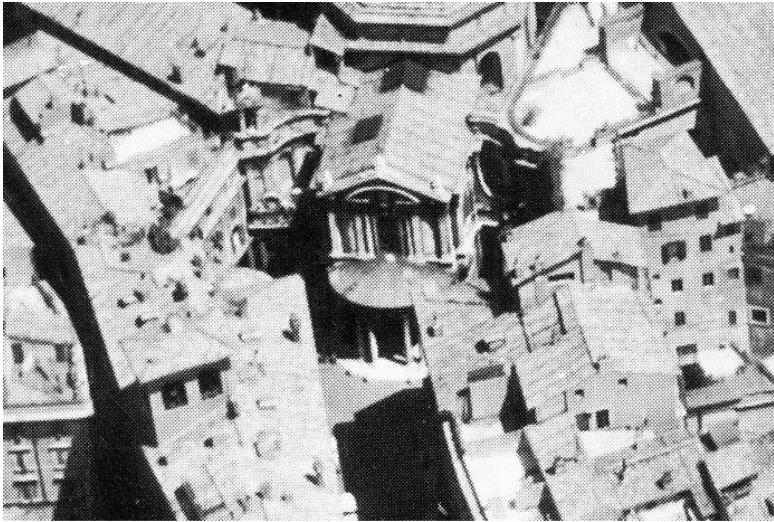
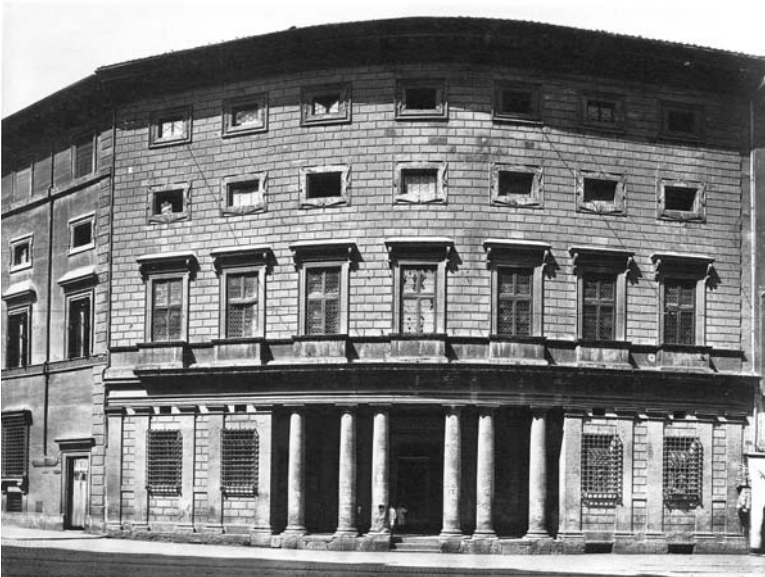
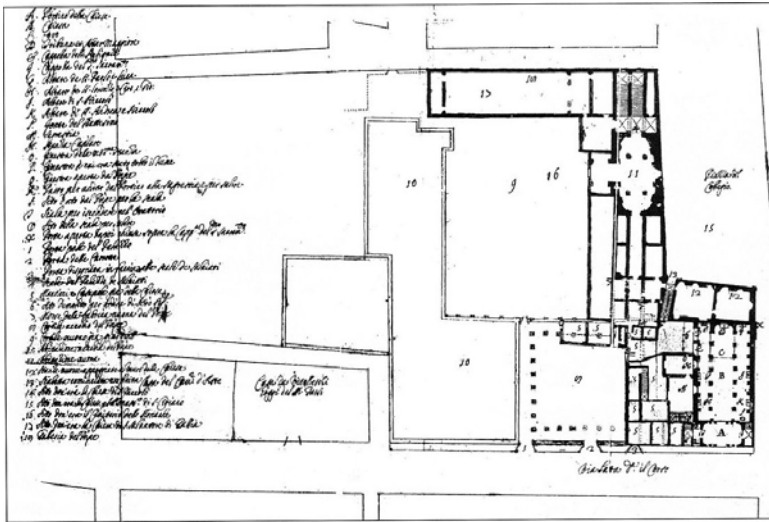
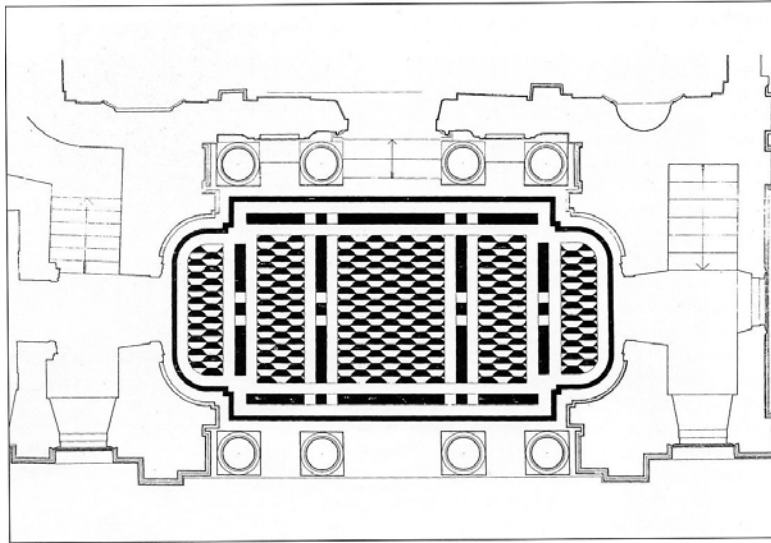
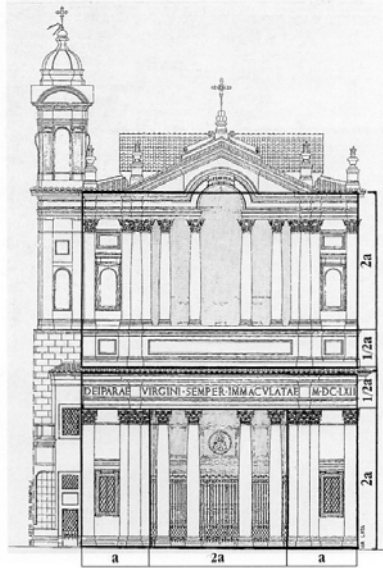


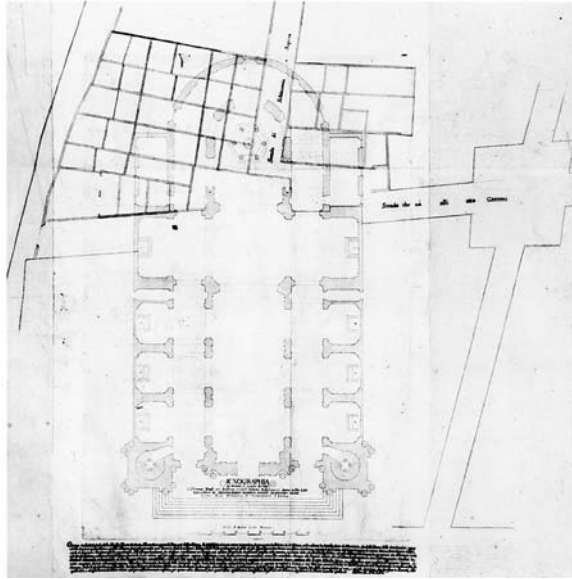


Fig.1 – S. Maria in Via Lata, Oratorio di S. Paolo: l'altare in "marmi mischi". Al centro, il bassorilievo con i Ss. Pietro, Paolo, Luca e Marziale, scolpito da Cosimo Fancelli









Pianta dei Santi Ambrogio e Carlo al Corso a Roma di Onorio Longhi, nel disegno presentato ai "mastri di strade" per ottenere la ripresa dei lavori nel 1665 (BAV, Chigi P.VII, 10, f. 21r).

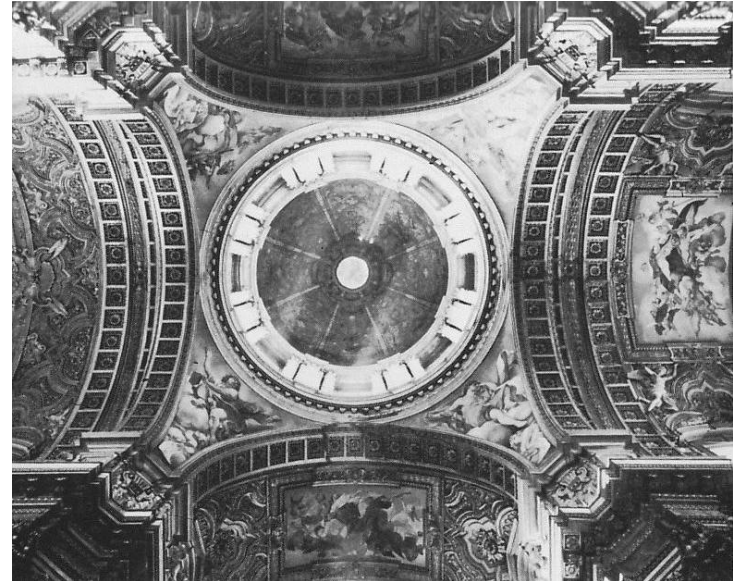




Fig.7 – Ss. Ambrogio e Carlo al Corso: tribuna, dettaglio della volta. A sinistra, il "contr'arco con ovoli" sovrapposto al "mezz'arco" a cassettoni; sulla destra, il "giro del festone di lauro" (AALR, Liber Instrumentorum..., 57, ff.9v-11v)

