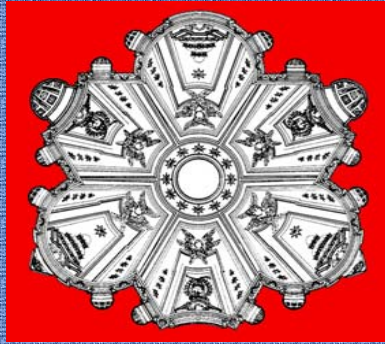
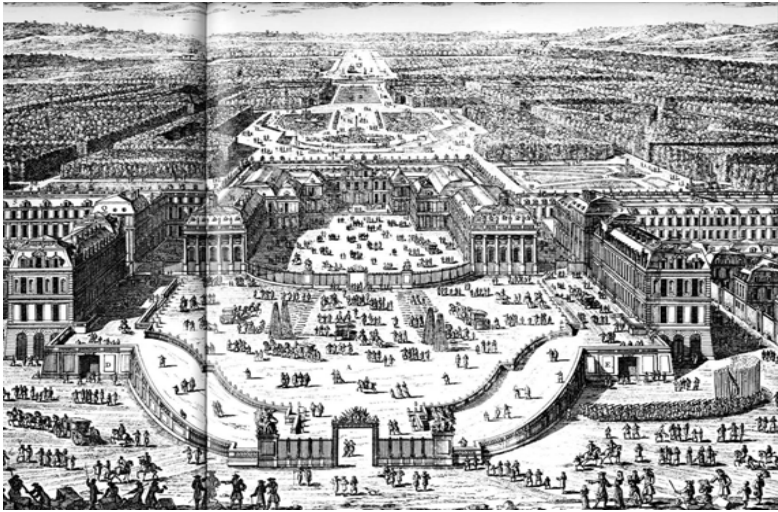
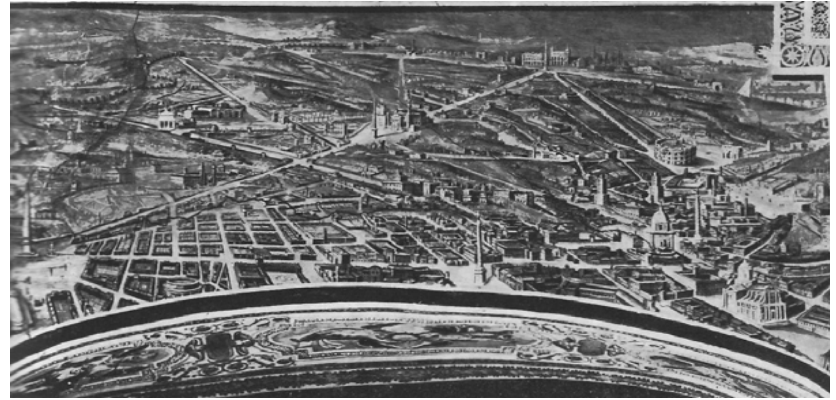


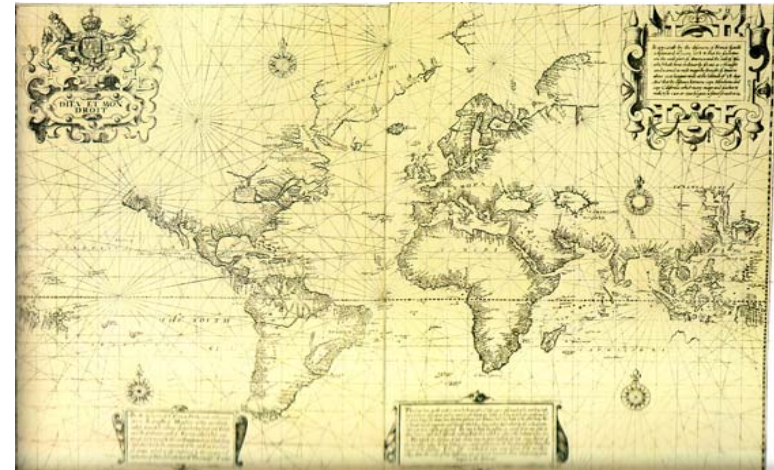
Corso di *Architettura del XVII secolo in Italia*
2. La critica e il Barocco



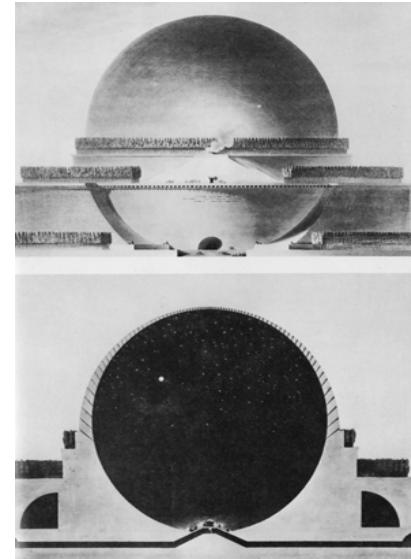
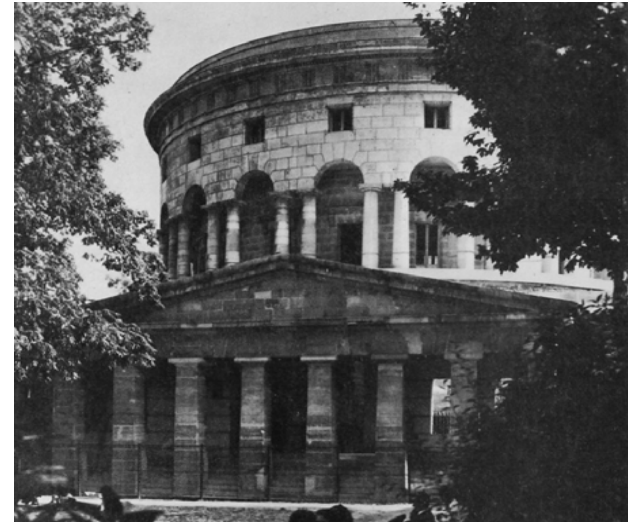


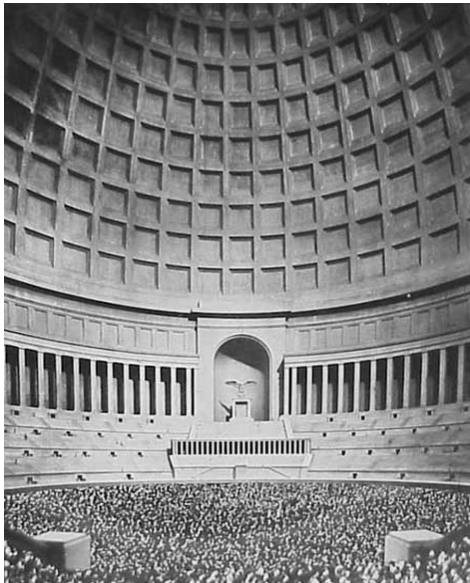
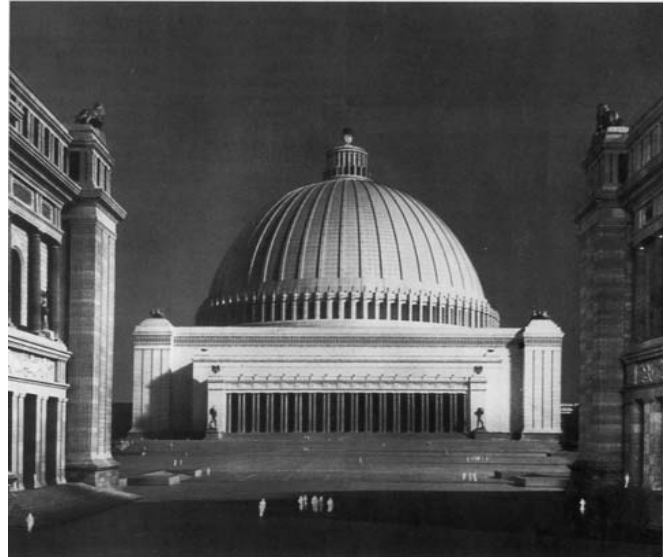
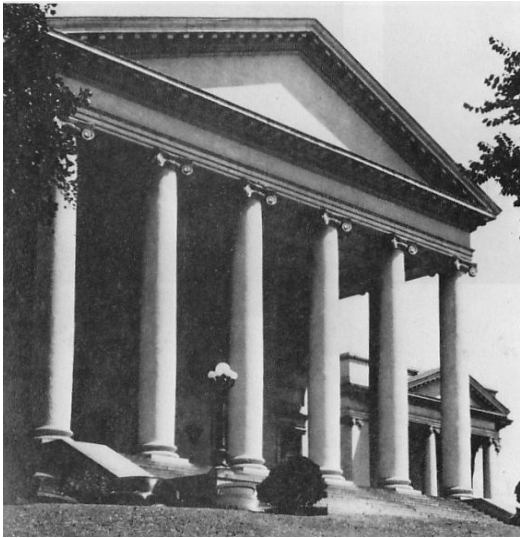


1. S. DELLA BELLA, Aristotele che conversa con Tolomeo e Copernico (antiporta all'ed. del Dialogo, Firenze, G.B. Landini, 1632). Roma, Biblioteca Corsimiana.



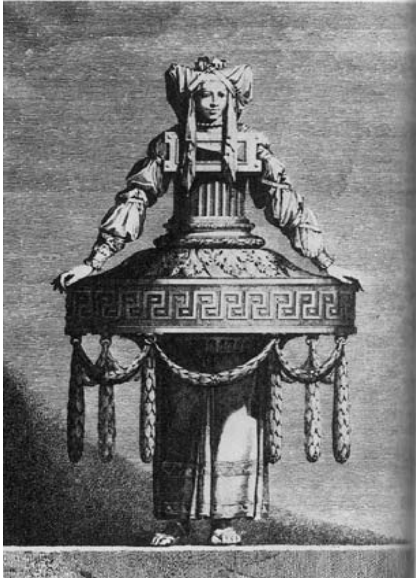
Planisfero, 1599

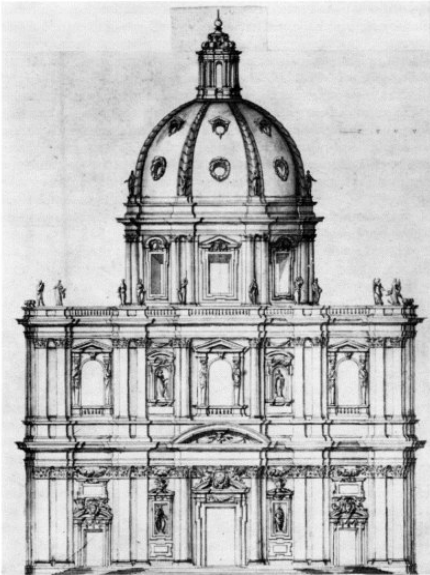




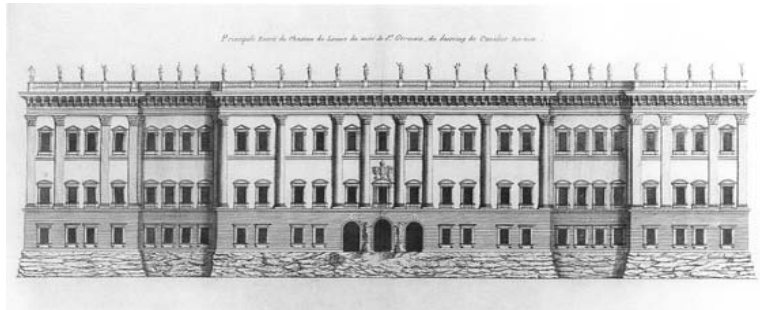


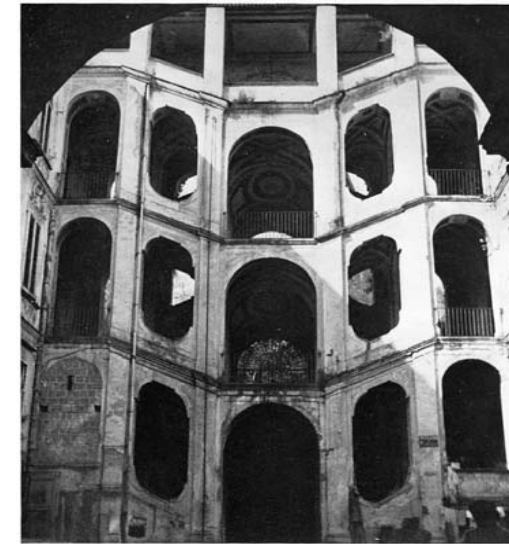
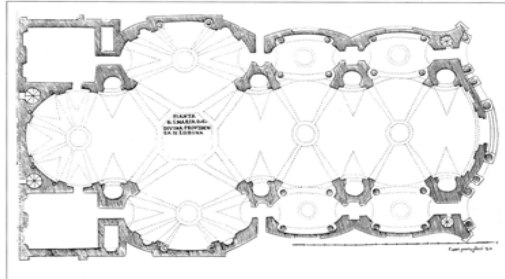
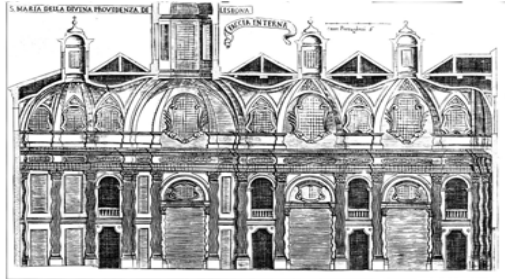














Firenze. L'abolizione delle
facciate dipinte del Duomo e
di S. Spirito



Rignano sull'Arno, Santa Maria di Rosano.
A sinistra, sono ancora presenti gli stucchi e l'altare maggiore.
A destra, la chiesa dopo i lavori di ripristino





La Cattedrale di Bari

A sinistra: la navata centrale con la ricca decorazione a stucco di D.A. Vaccaro (1738-45).

Sotto: la Cattedrale dopo il ripristino delle strutture romaniche

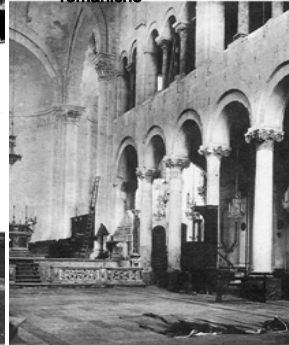


Fig. 1. Prato, S. Francesco, 1902. La navata della chiesa prima dei restauri.

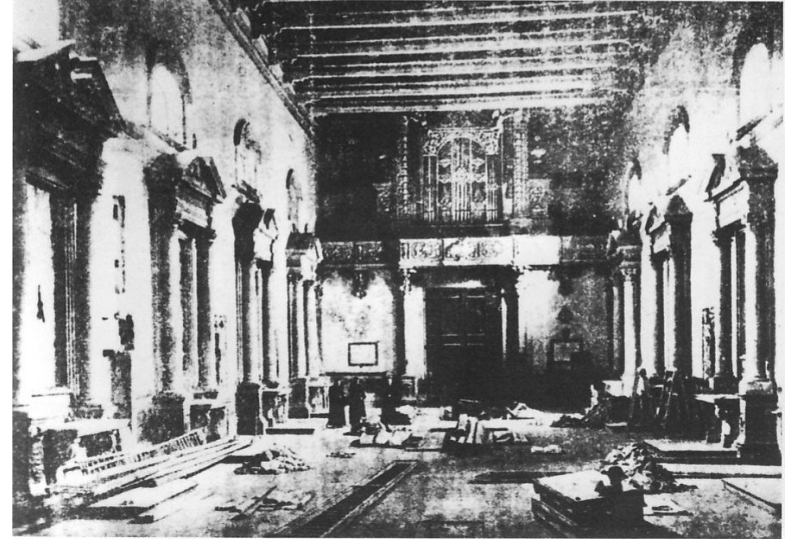


Fig. 1. Prato, S. Francesco, 1902. La navata della chiesa prima dei restauri.

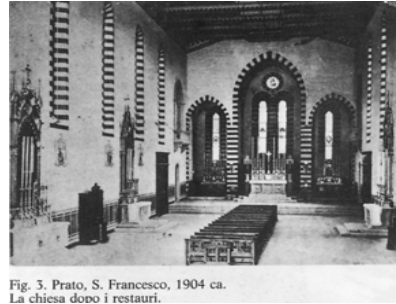


Fig. 3. Prato, S. Francesco, 1904 ca. La chiesa dopo i restauri.

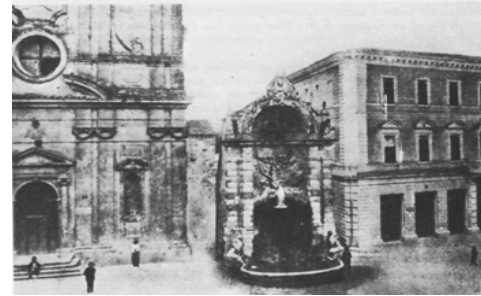


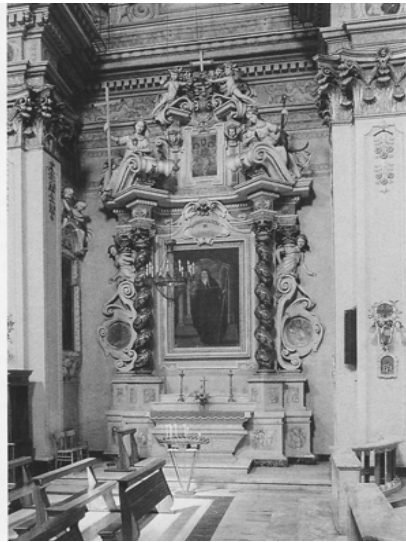
Fig. 4. Prato, S. Francesco. Un'immagine della navata prima dei restauri del 1978.



Fig. 5. Prato, S. Francesco. Veduta della navata dopo i restauri del 1978.









Bitonto, San Francesco di Paola con la terminazione a loggiato (prima metà '700) prima e dopo il "restauro"

